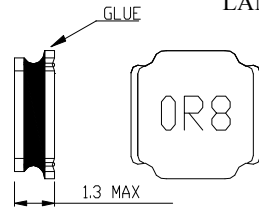
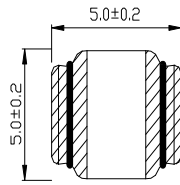


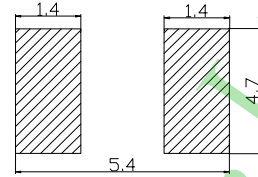
**Inductance Range:** 1μH~15μH  
**Temperature Range:** -40℃~+125℃

**PNR5012-Series**

### DIMENSIONS(mm)



LAND PATTERNS(mm) CONSTRUCTION Shield



### FEATURES:

- ★Quantity / Reel: 2500pcs
- ★Small products, Quadrate 5.0mm Max, Height 1.3mm Max.
- ★The use of carrier tape package for SMT reflow soldering process
- ★Widely use in DC-DC converter/LCD TV/Notebook/  
PDA/MP3 & MP4 player/Digital camera/DVD etc.
- ★Design to customer requirement

**RoHS Compliant(SGS Certified Result)**

Pb	Cd	Cr+6	PBBs	PBDEs
<1000ppm	ND	ND	ND	ND

### Electrical Characteristics:

Part Number	Test Condition	Inductance (μH)	Tolerance (%)	D.C.R(Ω) Max.	Rated Current(A)
PNR5012-1R0M	100KHz/0.3V	1.0	±30	57m	4.4
PNR5012-1R5M	100KHz/0.3V	1.5	±30	72m	3.7
PNR5012-2R2M	100KHz/0.3V	2.2	±30	90m	3.1
PNR5012-3R3M	100KHz/0.3V	3.3	±20	126m	2.45
PNR5012-4R7M	100KHz/0.3V	4.7	±20	164m	2.2
PNR5012-6R8M	100KHz/0.3V	6.8	±20	245m	1.75
PNR5012-100M	100KHz/0.3V	10	±20	344m	1.4
PNR5012-150M	100KHz/0.3V	15	±20	436m	1.25

- 1、 Inductance is measured with a LCR meter:HP4284A & 3532-50 or equivalent.
- 2、 D.C .R is measured with a Digital Multimeter TH2512B or equivalent.
- 3、 The Isat is the current at which the inductance decreases by 30% from the initial value
- 4、 The Irms by Stand-Type is the current at which the temperature rise is ΔT≤40℃, whichever (Ta=20℃)